



mayamini

PRODUCT
GUIDE



800.338.2372
cmecorp.com



Built in the USA for durability, strength, safety, and performance, the MayaMini is designed for quick access to commonly used supplies and tools.

Engineered with a modified base and smaller casters, MayaMini is the perfect option for under-counter storage. Also available in ultra low, the MayaMini offers the flexibility of an additional workspace perfect for tasks performed from a seated position.

Easy-clean drawer handles with an embedded silver ion antimicrobial additive and optional seamless drawer trays can help minimize healthcare associated infections (HAIs), while quiet close drawer glides can help improve patient satisfaction scores. With its antimicrobial surface coating, the optional auto locking electronic lock is compliant with regulatory standards.



Made of high-impact, seamless polymer construction, available MayaCart trays and dividers optimize the available storage space in each drawer.

MAYAMINI	MAYAMINI ULTRA-LOW
24.00"W x 21.55"D x 32.07"H	24.00"W x 21.55"D x 31.38"H
Cart Weight: 90 lb	Cart Weight: 90 lb
Shipping Weight: 133 lb	Shipping Weight: 133 lb
Drawer Configuration*: (2) 3", (1) 6", (1) 9"	Drawer Configuration*: (2) 3", (1) 6", (1) 9"
Casters: (4) 3" swivel type locking casters	Casters: (4) 2" swivel type locking casters

**Carts come with preconfigured drawers or as a shell with a customizable drawer configuration*



ANTIMICROBIAL ENHANCEMENT

We are committed to helping our customers maintain a clean and safe environment for their patients and staff. Drawer handles on all MayaCarts have a silver ion antimicrobial additive embedded in them.

MATERIALS

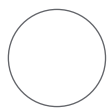
Shell	Aluminum Polyethylene Composite Panels
Base	Powder Coated Steel with Full Thermoformed ABS Shell
Drawers	Powder Coated Steel
Drawer Handles	ABS Plastic
Corner Extrusion	Anodized Aluminum
Work Top	Seamless Thermoformed ABS with Raised Edges
Drawer Glides	88 lb (40 kg) Limit, Steel Ball Bearings
Finish, Exterior Metal Surfaces	Anodized Aluminum Posts, and Powder Coated Aluminum Faced Side Panels
Casters	Steel Mounting Plates with Full-Swivel Plate Type: (4) 3" Locking Casters Steel Mounting Stems With Swivel Type: (4) 2" Locking Casters (available for the Ultra Low MayaMini only)

SPECIFICATIONS

Accessory Mounting System	Powder Coated Steel
Drawer Dimensions	21.8"W x 17.0"D
Drawer Capacity	35 lbs
Top Work Surface Capacity	35 lbs
Pull Out Work Surface	Not Available

COLOR OPTIONS

MayaCart drawers are available in sky white, red, green, blue, dark blue and yellow as shown.



Sky White



Red



Green



Blue



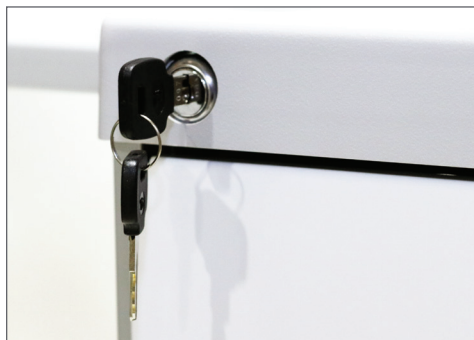
Dark Blue



Yellow

LOCKING OPTIONS

Key locks are standard on all models.



Standard Key Lock



Push Button Electronic Lock



Breakaway Lock Bar

mayamini accessories

A range of accessories compatible with MayaMini are available to further customize the MayaCart to your needs.



MAYA-3TDSET
3" Tray and Dividers



MAYA-6TDSET
6" Tray and Dividers



MAYA-9TDSET
9" Tray and Dividers



MAYA-SR
Side Rail Mount



MAYA-UH
Utility Hooks *



MAYA-SHPBRK
5 Qt. Locking Bracket
for Sharps Container *



MAYA-CH
Chart Holder *



MAYA-1GB
Single Glove Box Holder*



MAYA-3GB
Triple Glove Box Holder *



MAYA-WB
Plastic Waste Bin *



MAYA-BIN
Side Storage Bin Medium **



MAYA-SHP
5 Qt. Sharps Container
(5 Qt. Locking Bracket Required)



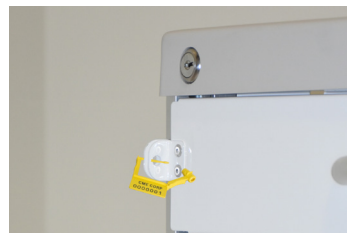
MAYA-PS
Medical Grade Power Strip,
6 Outlets, 15 ft. Cord
(Cord Wrap Recommended)



MAYA-CW
Cord Wrap



MAYA-CSLOCK
Controlled Substance Key
Lock for MayaCart
Top Drawer ***



MAYA-BL
Single Drawer Breakaway
Lock Bracket



MAYA-BLT
Breakaway Lock Seals
(Bag of 100)

**requires two side rail mounts (MAYA-SR)

***standard trays will not work in the top drawer with a MAYA-CSLOCK installed
(MAYA-TD3 or MAYA-6TD will work in a drawer with a MAYA-CSLOCK installed)